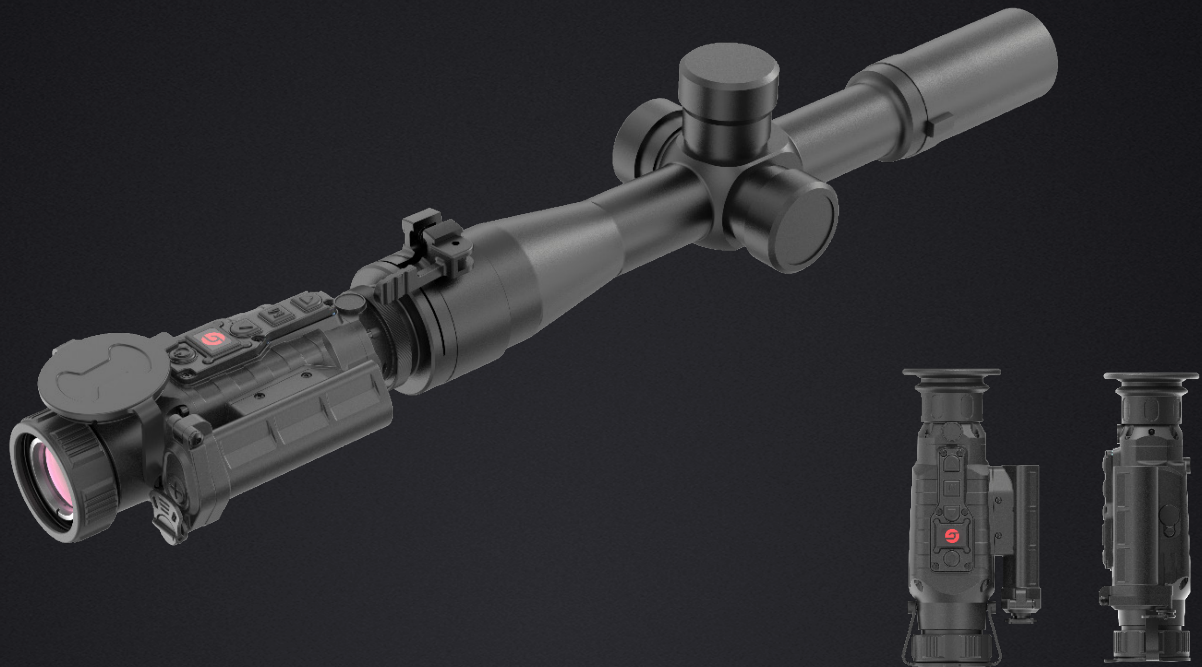


# TA Gen2 series

Clip-on  
Thermal Imaging Attachment

Clearer and Longer, Capturing What You See



## Introduction

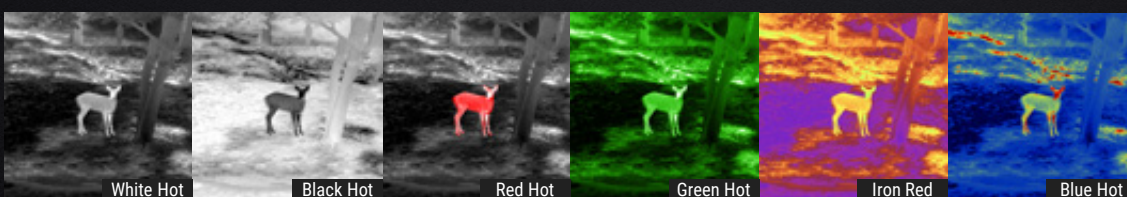
Based on the self-developed 17  $\mu\text{m}$  and 12  $\mu\text{m}$  thermal detectors with 400×300 and 640×480 pixel resolutions respectively, the TDE-Tech, PureIR algorithm, and HD OLED displays, the TA Gen2 Series offers sharp and detailed images while retaining the accuracy of the day scope. Suitable for scopes with different calibers from 40 mm to 70 mm, the TA Gen2 makes an thermal upgrade that transforms day scopes into potent thermal imaging aiming systems for 7 hours of non-stop operation in harsh conditions.

## Features and Benefits

- 400×300/640×480 IR resolution for clear images
- TDE-Tech and PureIR algorithm for detail enhancement of targets
- Fast and easy replaceable 18650 battery for 7 hours of operation
- One-step installation and no re-zeroing
- Wireless remote control for easy operation
- IP67 dustproof and waterproof rated
- 6 color palettes for tasks in changing conditions
- A wide range of operating temperatures (-30 to 50°C)

## Applications

- Outdoor Adventure
- Search & Rescue
- Marine Navigation
- Law Enforcement



## Specifications

Product model	TA421	TA431	TA451	TA621	TA631	TA651
<b>Infrared detector</b>						
Detector type	VOx, 8 to 14 $\mu$ m					
Detector resolution	384 × 288, 17 $\mu$ m			640 × 480, 12 $\mu$ m		
NETD	≤ 40 mk					
Frame rate	50 Hz					
<b>Lens</b>						
Focal length	25 mm; F1.1	35 mm; F1.2	50 mm; F1.2	25 mm; F1.0	35 mm; F1.0	50 mm; F1.0
Field of angle	14.9°×11.2°	10.7°×8°	7.5°×5.6°	17.5°×13.1°	12.5°×9.4°	8.8°×6.6°
Optical zoom	1x					
Digital zoom	1x, 2x and 4x			1x, 2x, 4x and 8x		
Focus	Manual					
<b>Power</b>						
Battery type	Single 18650 battery					
Battery life	≥ 7 hours					
<b>Interface</b>						
Video interface	LEMO					
Mechanical interface	Picatinny					
<b>Display</b>						
Display type	0.39" OLED			0.5" OLED		
Resolution	1024 × 768			800 × 600		
Eyepiece	Exit pupil distance ≥ 10 mm, Exit pupil diameter ≥ 20 mm			Exit pupil distance ≥ 20 mm, Exit pupil diameter ≥ 20 mm		
Video output	Analog video					
<b>Functions</b>						
Hot spot tracking	Available					
Scene modes	Enhanced, Highlight and Natural					
Color palettes	White Hot, Black Hot, Red Hot, Green Hot, Iron Red, Blue Hot					
Compensation modes	Shutter and scene compensation					
<b>Environmental</b>						
Operating temperature range	-30°C to 50°C					
Storage temperature range	-45°C to 70°C					
Humidity	10 % to 95 % non-condensing					
Shock	500 G at 1 ms half sine pulse (as per IEC60068-2-27)					
Vibration	5Hz~200Hz~5Hz 0.15mm (as per IEC60068-2-6)					
Encapsulation	IP67					
Certification	IP67, FCC, CE, RoHS, EAC, WEEE, un38.3, Certification for Air transport					
<b>Detection range</b>						
Detection range	700 m	1000 m	1400 m	1000 m	1400 m	2000 m
<b>Physical</b>						
Weight	≤ 475 g	≤ 490 g	≤ 550 g	≤ 540 g	≤ 550 g	≤ 660 g
Size (L × W × H)	153×57×79 mm	157×58×79 mm	178×62×83 mm	161×57×79 mm	161×60×79 mm	177×66×87 mm
Standard	Device×1, Eye mask×1, Carry bag×1, 7-pin LEMO to USB cable×1, Battery charger×1, 18650 battery×1, Quick start guide×1, Warranty card×1					
Optional	External eyepiece, Adapter ring, Picatinny rail, Bluetooth remote control (with hook-and-loop fastener), 7-pin LEMO to USB and AV cable					