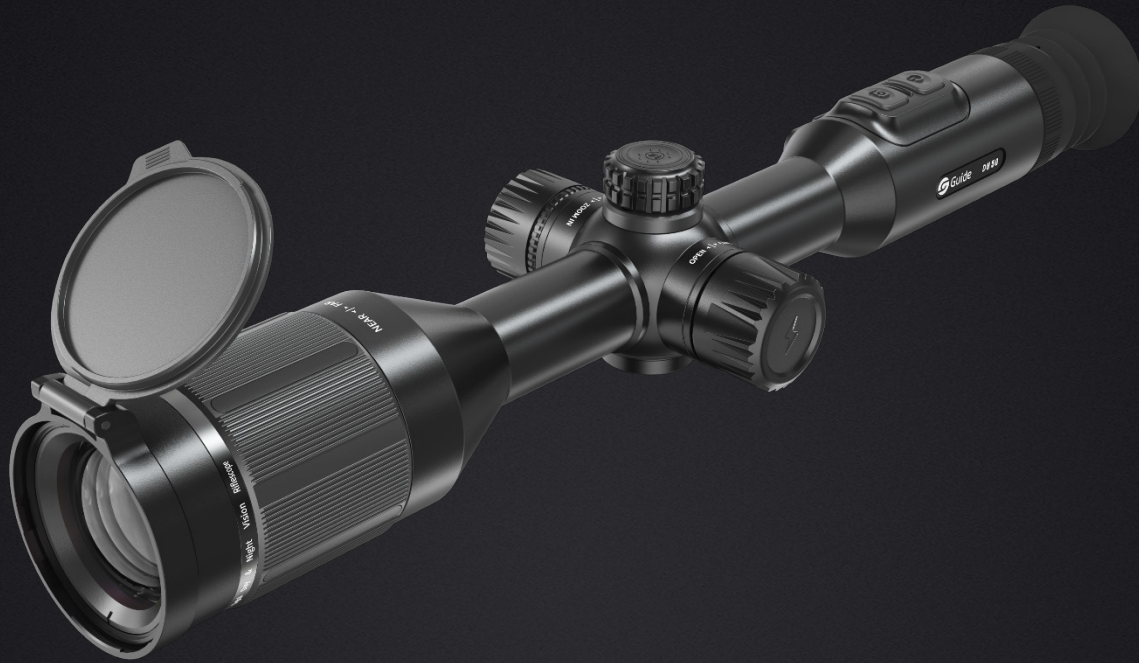


DU series

Digital Day & Night
Vision Riflescope

The Ideal Nighttime Hunting Partner

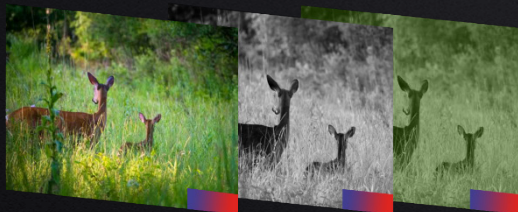


Introduction

DU Series is a high-performance Digital Day & Night Vision Rifle Scope designed for professional hunting. The high-sensitivity 1920x1080 CMOS Sensor that offers outstanding image quality. The full-color HD 1920x1080 OLED display guarantees the smallest image detail with meticulous care to respect users' wishes. The advanced dual battery system provides up to 15 hours of non-stop use from day to night.

Features and Benefits

- Highly Sensitive 1920x1080 Sensor for image acquisition
- Full HD OLED Display for image detail
- Day, Low-light and Night modes
- 15 hours super long battery life
- Mounting on standard 30 mm rings
- 10 distinct reticles with 6 color schemes and 10 levels of brightness
- Compact and lightweight
- Encapsulation IP67



Applications

- Outdoor observing
- Law Enforcement
- Night Hunting
- Wild Adventure

Specifications

Product model	DU50
Sensor	
Sensor type	CMOS
Resolution	1920×1080@4μm
Frame rate	50 Hz
Lens	
Focal length	50mm F1.2
Field of view	9°x 5.2°
Optical zoom	3.125x
Digital zoom	1 – 8x
Display	
Display type	0.39" OLED
Resolution	1920×1080@4.5um, FHD
Eye relief	≥ 48 mm
Video output	Digital video
Power	
Battery type	a built-in battery and a customized battery
Battery life	15 hours
Interface	
USB	USB Type-C
Video interface	micro HDMI
Tube diameter	Standard 30 mm
Functions	
Recording function	Photo/Video
WIFI	Transmission of real-time video via WIFI for remote control in the 2.4G frequency band and within 15 meters
Scene modes	Day, Night and Low-light Modes
IR illuminator	850 nm
System	
Language settings	English, Russian, German, French, Chinese, Italian, Spanish, Japanese, Korean
Memory capacity	32 GB
Environmental	
Operating temperature range	-30°C to 50°C
Storage temperature range	-40°C to 70°C
Humidity	10 % to 95 % non-condensing
Shock	800G/1ms semi-sinoidal IEC60068-2-27
Encapsulation	IP67
Certification	CE, FCC, EAC, RoHS
Detection range	
Detection range	600m
Physical	
Weight	≤ 980 g (without eye mask and battery)
Size	≤ 371×107×68 mm (without eye mask)
Standard	Device, lens cover, eye mask, 5V2A adapter (China, US, Britain, Australia and Europe), customized battery×2, customized battery charger, USB Type-C cable, micro HDMI cable, lens cover, eye mask, clip×2, IR illuminator, IR illuminator bracket, user guide, quick start guide
Optional	Customized battery, Laser rangefinder, Bluetooth controller, Dovetail rail